



# KOX17 Polyclonal Antibody

<b>Catalog No</b>	YP-Ab-01843
<b>Isotype</b>	IgG
<b>Reactivity</b>	Human;Mouse;Rat
<b>Applications</b>	WB;IHC;IF;ELISA
<b>Gene Name</b>	ZNF24
<b>Protein Name</b>	Zinc finger protein 24
<b>Immunogen</b>	The antiserum was produced against synthesized peptide derived from human ZNF24. AA range:10-59
<b>Specificity</b>	KOX17 Polyclonal Antibody detects endogenous levels of KOX17 protein.
<b>Formulation</b>	Liquid in PBS containing 50% glycerol, 0.5% BSA and 0.02% sodium azide.
<b>Source</b>	Polyclonal, Rabbit,IgG
<b>Purification</b>	The antibody was affinity-purified from rabbit antiserum by affinity-chromatography using epitope-specific immunogen.
<b>Dilution</b>	WB: 1/500 - 1/2000. IHC: 1/100 - 1/300. ELISA: 1/10000.. IF 1:50-200
<b>Concentration</b>	1 mg/ml
<b>Purity</b>	≥90%
<b>Storage Stability</b>	-20°C/1 year
<b>Synonyms</b>	ZNF24; KOX17; ZNF191; ZSCAN3; Zinc finger protein 24; Retinoic acid suppression protein A; RSG-A; Zinc finger and SCAN domain-containing protein 3; Zinc finger protein 191; Zinc finger protein KOX17
<b>Observed Band</b>	48kD
<b>Cell Pathway</b>	Nucleus .
<b>Tissue Specificity</b>	Expressed in many tissues except in heart.
<b>Function</b>	function:May function as a transcription factor. Seems to repress transcription.,PTM:Phosphorylated upon DNA damage, probably by ATM or ATR.,PTM:Sumoylated.,similarity:Belongs to the krueppel C2H2-type zinc-finger protein family.,similarity:Contains 1 SCAN box domain.,similarity:Contains 4 C2H2-type zinc fingers.,tissue specificity:Expressed in many tissues except in heart.,
<b>Background</b>	function:May function as a transcription factor. Seems to repress transcription.,PTM:Phosphorylated upon DNA damage, probably by ATM or ATR.,PTM:Sumoylated.,similarity:Belongs to the krueppel C2H2-type zinc-finger protein family.,similarity:Contains 1 SCAN box domain.,similarity:Contains 4 C2H2-type zinc fingers.,tissue specificity:Expressed in many tissues except in heart.,



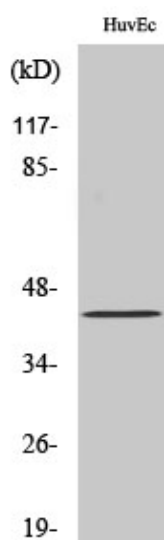
### matters needing attention

Avoid repeated freezing and thawing!

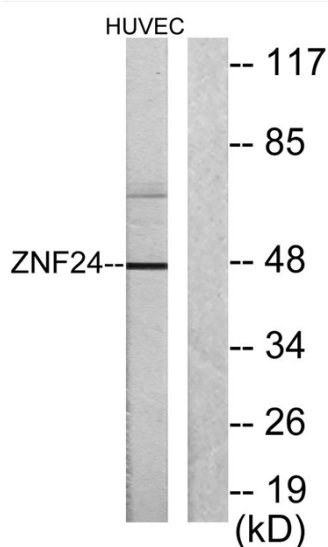
### Usage suggestions

This product can be used in immunological reaction related experiments. For more information, please consult technical personnel.

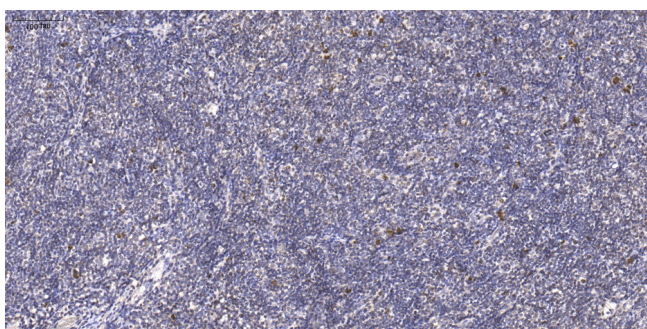
## Products Images



Western Blot analysis of various cells using KOX17 Polyclonal Antibody cells nucleus extracted by Minute TM Cytoplasmic and Nuclear Fractionation kit (SC-003, Invent biotech, MN, USA).



Western blot analysis of lysates from HUVEC cells, using ZNF24 Antibody. The lane on the right is blocked with the synthesized peptide.



Immunohistochemical analysis of paraffin-embedded human tonsil. 1, Antibody was diluted at 1:200 (4° overnight). 2, Tris-EDTA, pH 9.0 was used for antigen retrieval. 3, Secondary antibody was diluted at 1:200 (room temperature, 45 min).